



INVEST IN

Elephant Point River Suites

A RARE INVESTMENT OPPORTUNITY WITHIN
LEGACY'S ULTRA LUXURIOUS HOTEL PROJECT



*Welcome to Elephant Point River
Suites, where architectural brilliance
dances in unison with nature.*

Our Ultra-Luxurious Riverfront Suites redefine hospitality
through a 'Deconstructed' Hotel Model

*A destination
unlike any other*

The luxury 5 star hotel will comprise of a central
facility, spa, gym and 60 luxury suites along the
Sabie River. By separating the hotel's various
components, a wildlife corridor has been
created for the free passage of game with
a centralised waterhole.



The launch phase of the first 20 River Suites has been successfully sold out. There will be 60 of these luxurious suites in total, of which Legacy will retain ownership of a portion.

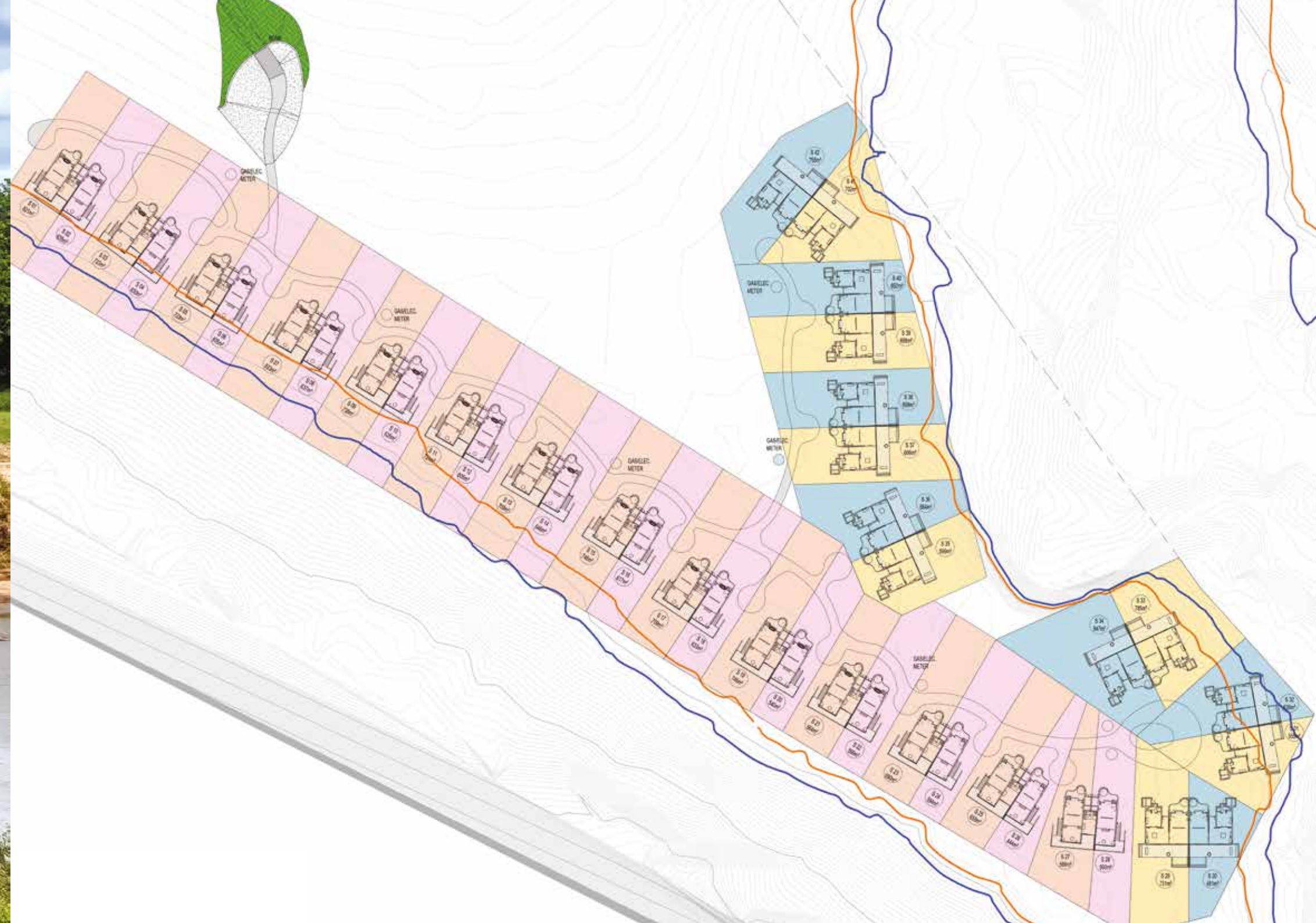
The concept of the River Suites at Elephant Point was born out of a combination of the luxury standard set by the existing privately owned lodges on the estate and the way we see the future of luxury hotel accommodation. The exclusive suites provide the ultimate tranquil and private bush experience supported centrally by world class hotel amenities and facilities.

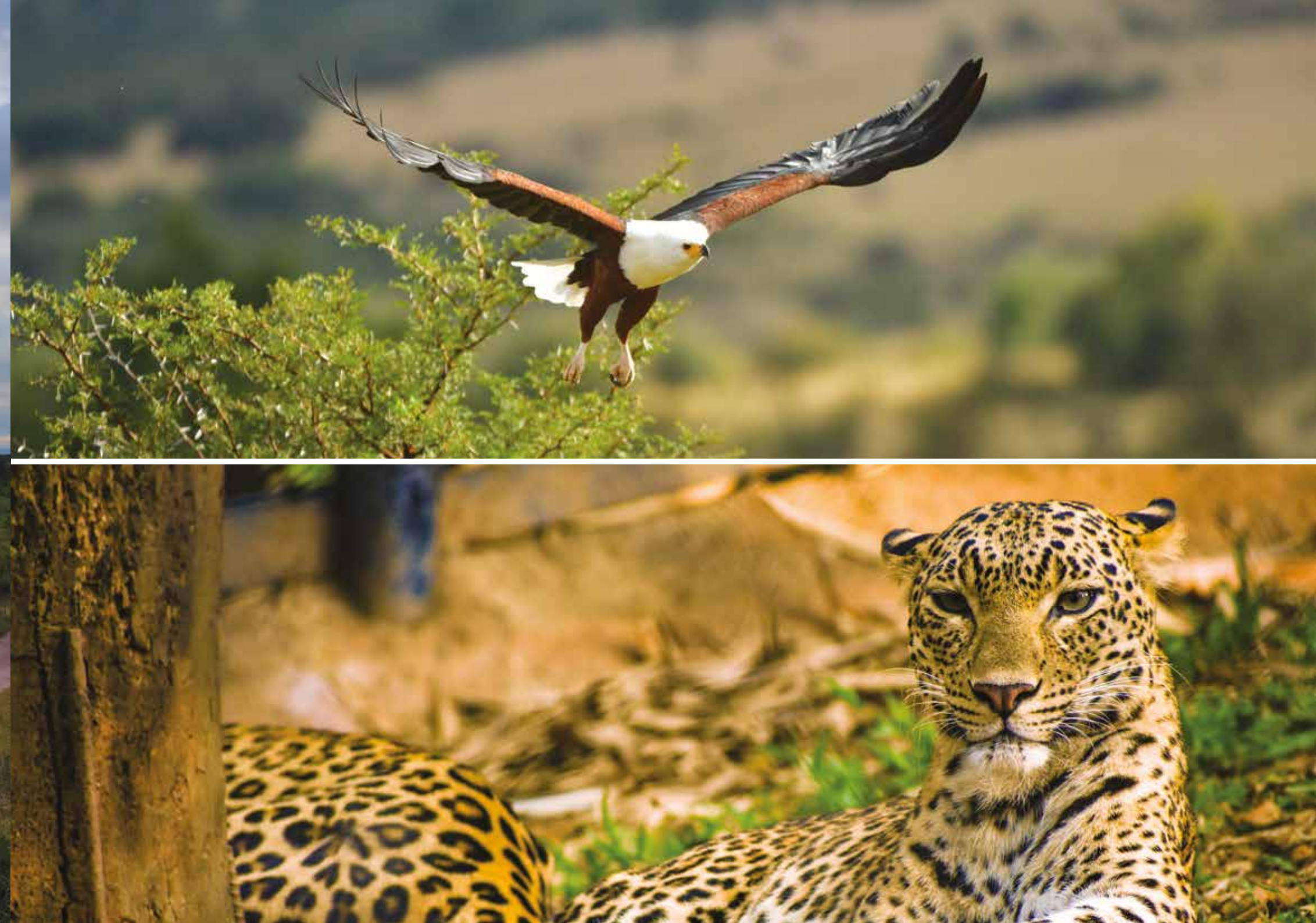
Hotel Site Plan



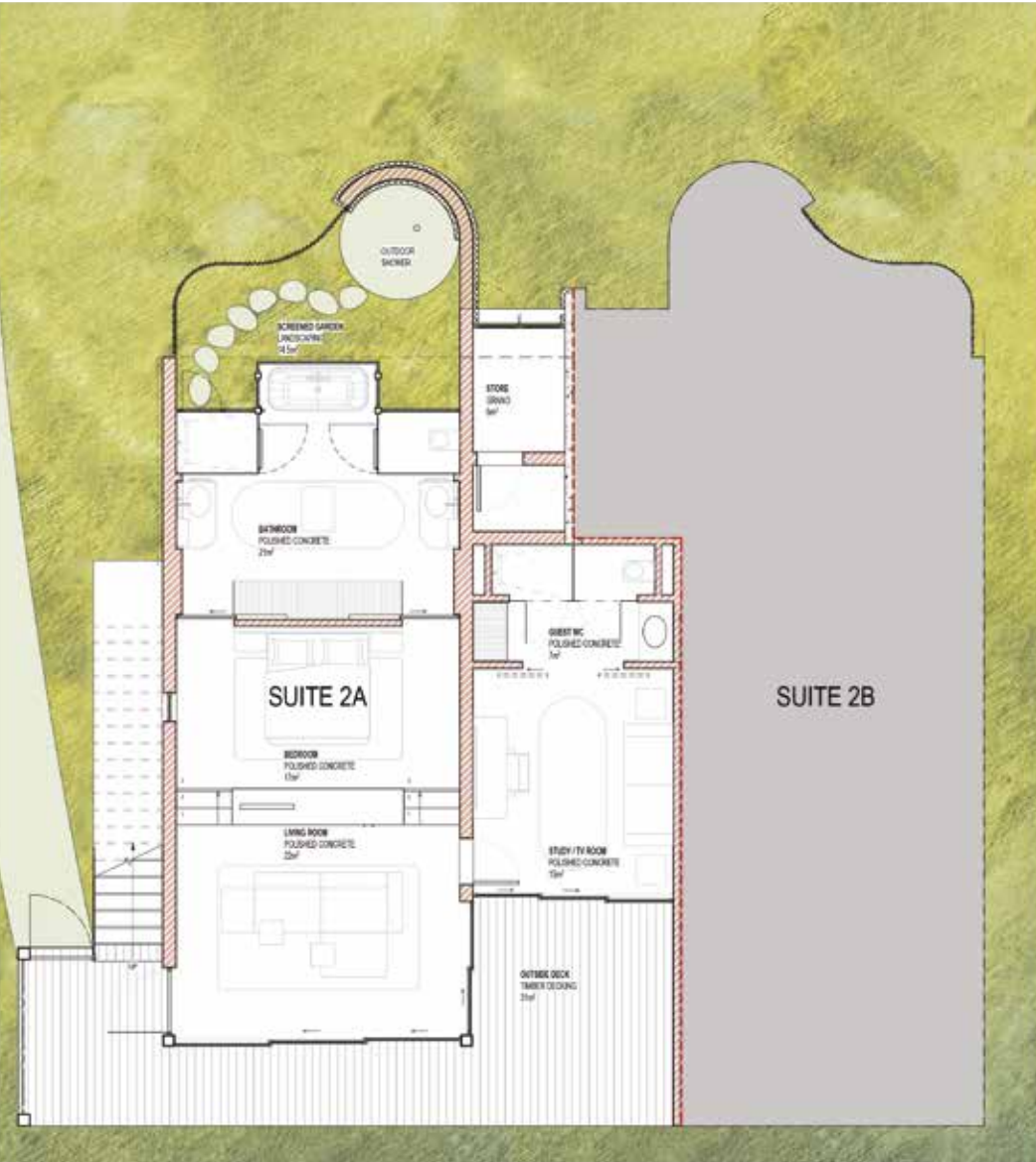


The architectural language of the Elephant Point River Suites has been developed by renowned architects of Co-Arc International to complement and respect the surrounding bush landscape while retaining modern architectural elements.

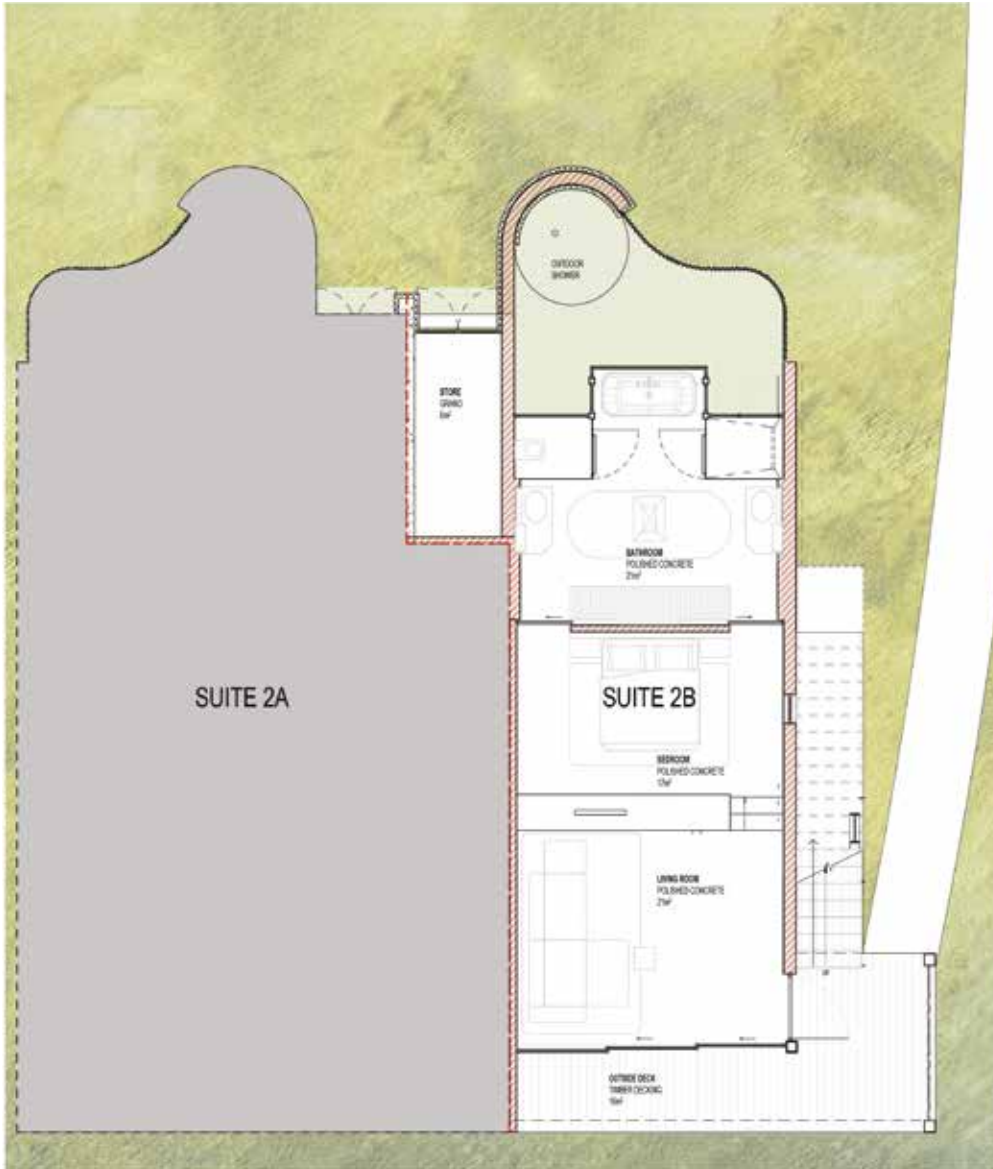




Duplex River Suite



Level 1



Level 1

Each block comprises two keys, offering a spacious luxury suite and an additional functional ensuite space.

The grand bedroom with a King bed can be closed off to the bathroom, which features a freestanding bath overlooking a private garden space, and a generously sized shower opening onto an outdoor oasis.

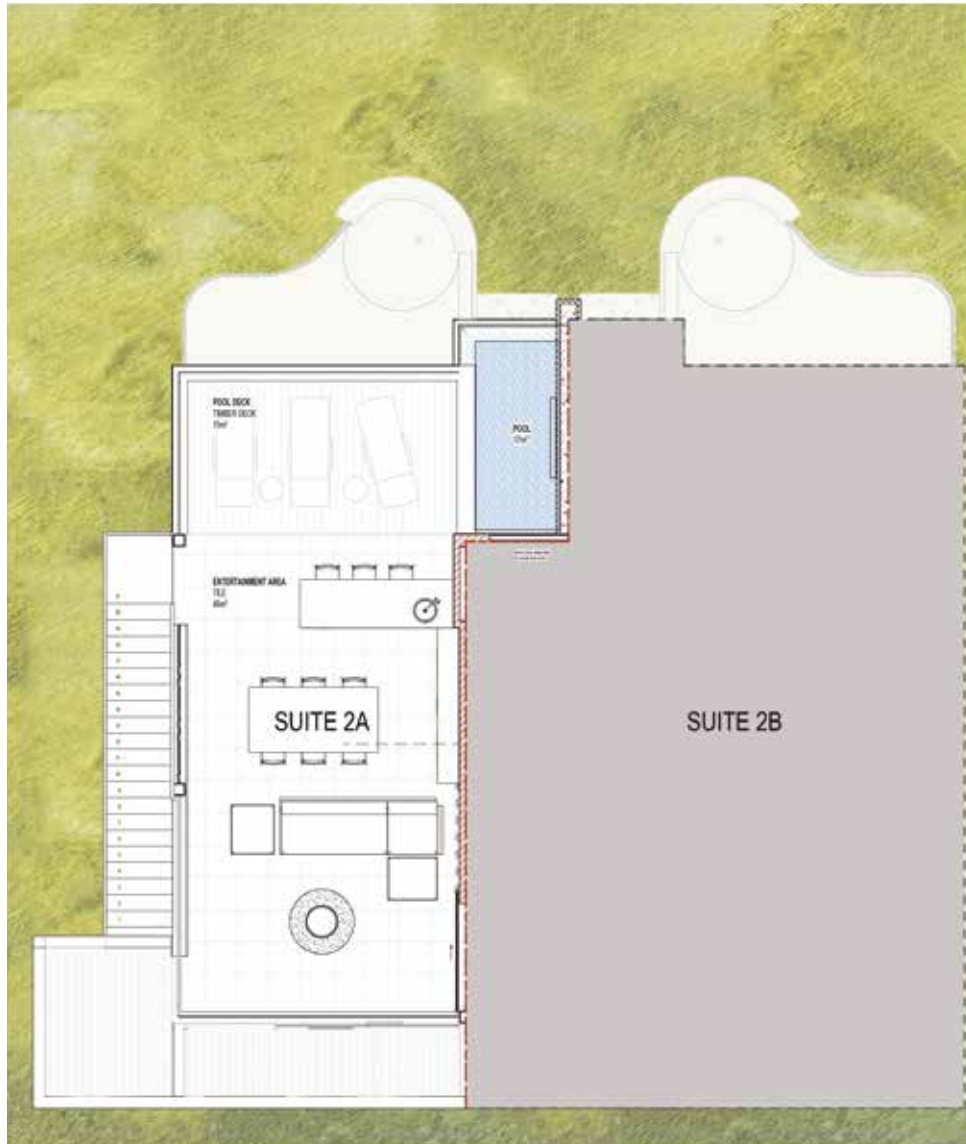
The true essence of the bush experience lies in the time spent outdoors, and the covered 60m² terrace of the Duplex Suites captures this perfectly. This shaded yet open environment along the Sabie River bank offers elevated views of the Sabie River to the South and the wildlife corridor and plains to the North. Each terrace is designed for ultimate comfort, featuring a gas braai, beverage cooler, dining facilities, a lounge space with a gas firepit, and an open section with sun loungers and a splash pool.



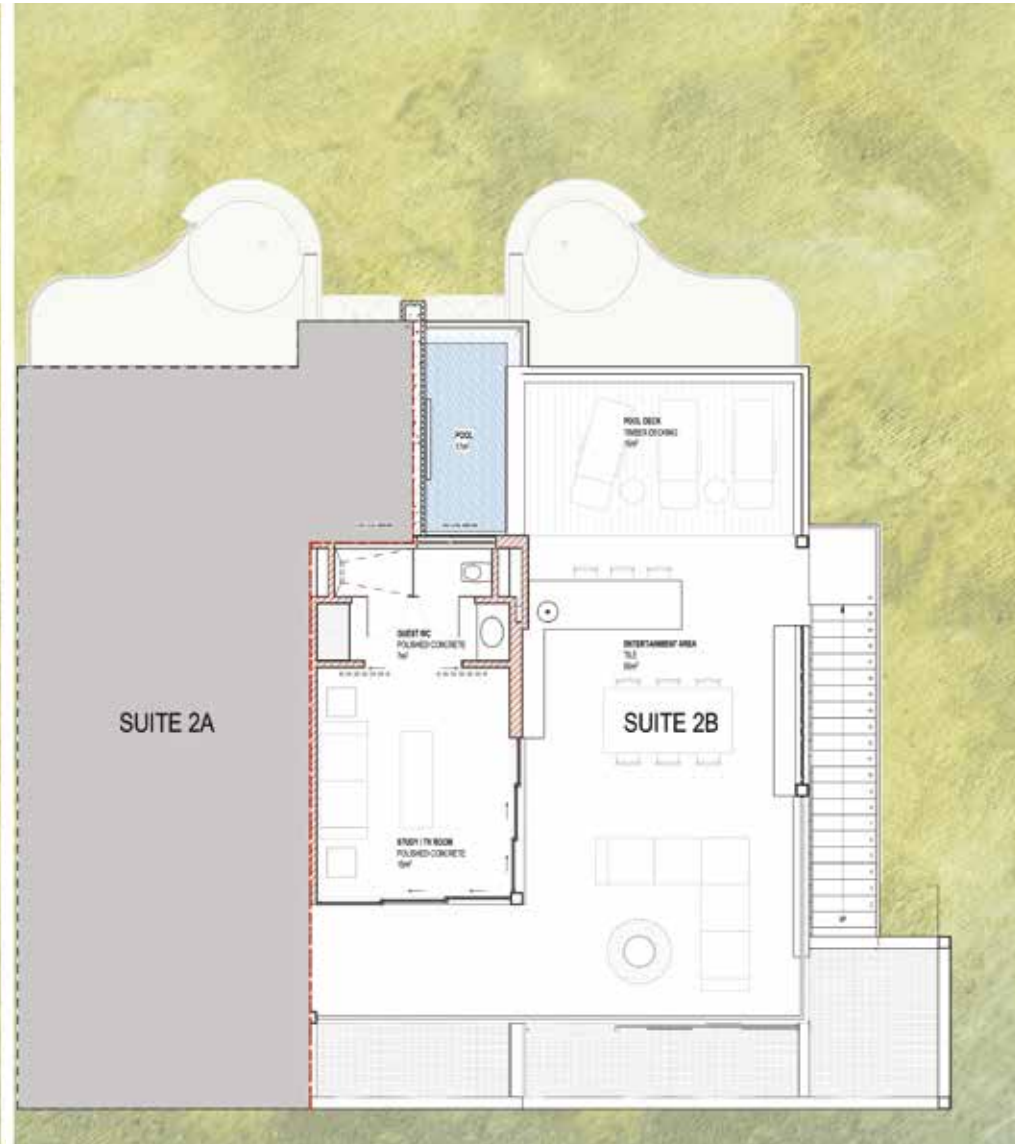
Bedroom and lounge



View from the lounge



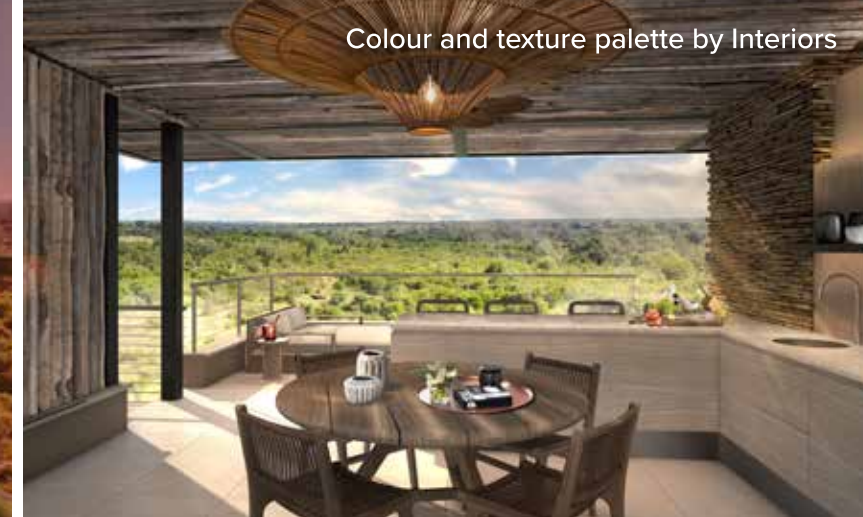
Level 2



Level 2



Upper floor



Colour and texture palette by Interiors



Upper level with viewing deck and private pool



Master bathroom

Simplex River Suite



Ground Floor



Hotel Central Block



The hotel's central block serves as its heartbeat, orchestrating seamless guest experiences.

To maintain tranquillity, all guest transport is managed by golf carts, ensuring a vehicle-free environment.

The reception space, also a pickup/drop-off point, efficiently facilitates guest excursions, game drives, and transfers to Elephant Point's various facilities.

The restaurant will be slightly elevated and overlooks a large timber pool deck with boma space, and a 25m swimming pool with kids pool. The ground floor, deck and pool are also slightly elevated above an expansive waterhole. The spa facility is to be developed to the West of the central block as a destination nestled in an impressive rock outcrop.



All finishes subject to adjustment



Scan to view
Elephant Point
video

CALL NOW TO ARRANGE A VIEWING AND SECURE YOUR RIVER SUITE

Ewan Dykes for more information on:
+27 83 755 8944 | edykes@magicb.co.za
www.elephantpoint.co.za | www.LegacyHotels.com